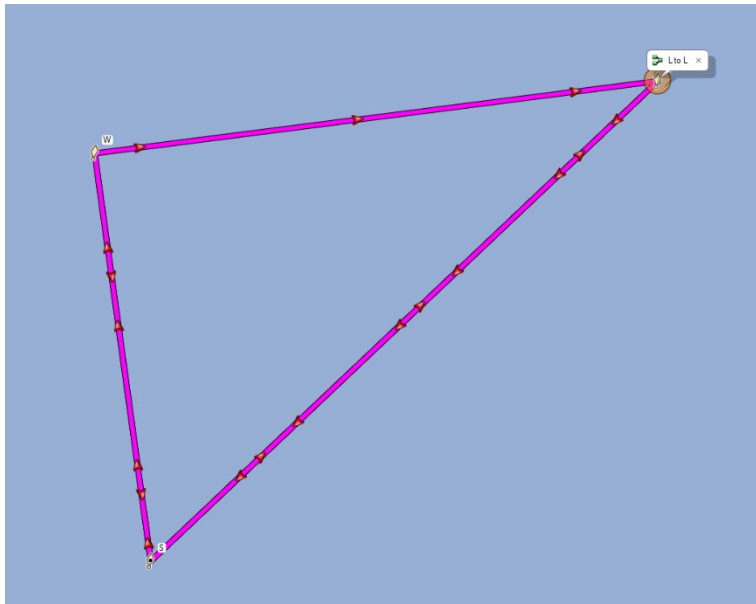
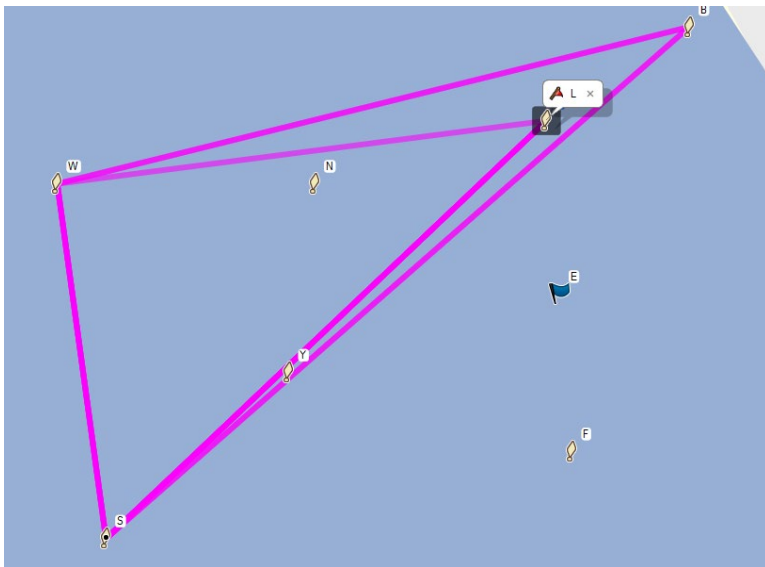


Proposed SW Wind Course to replace current Course 7



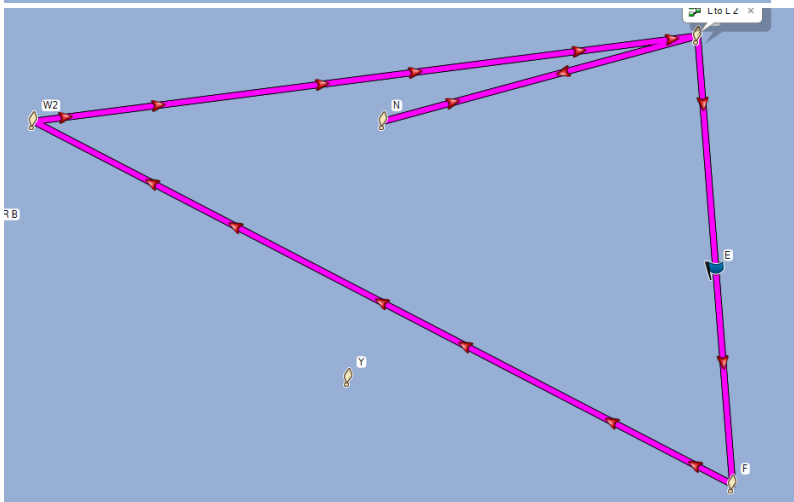
Div 2 11 nm

LSWLSWLSL



Div 1 15.5 nm

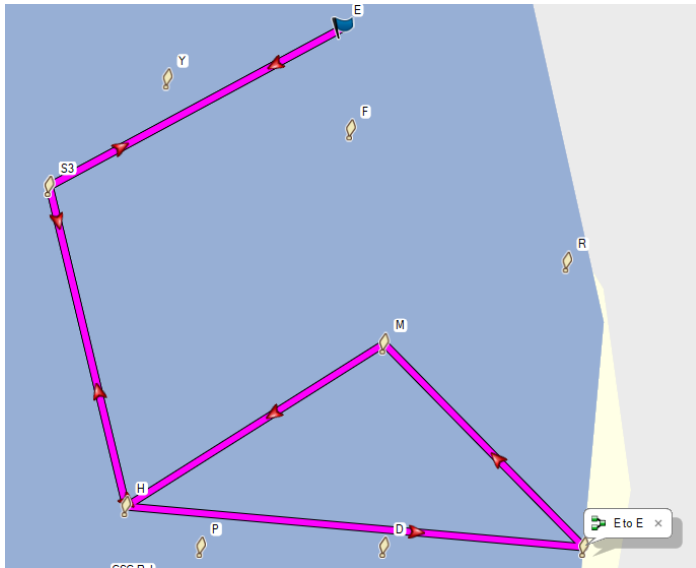
LSWBSWBSL



JAM 10.7 nm

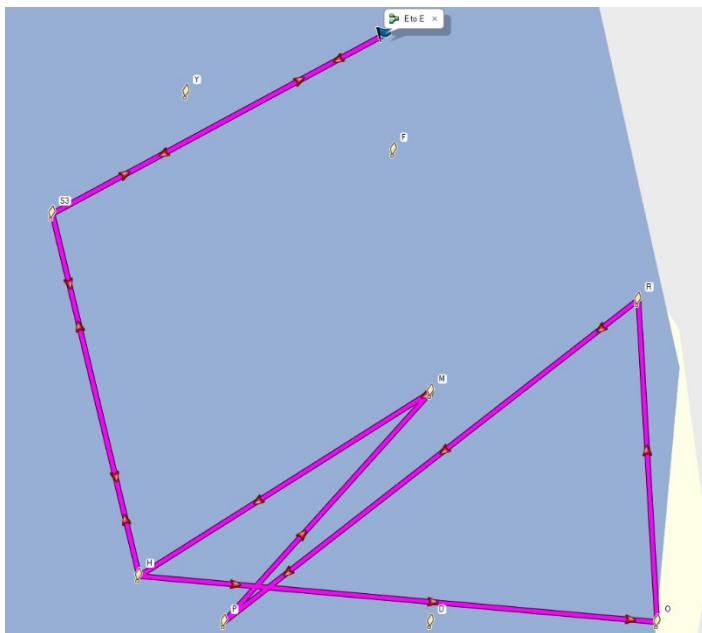
LFWLFWLNL

Proposed South Wind Course to replace Course 8



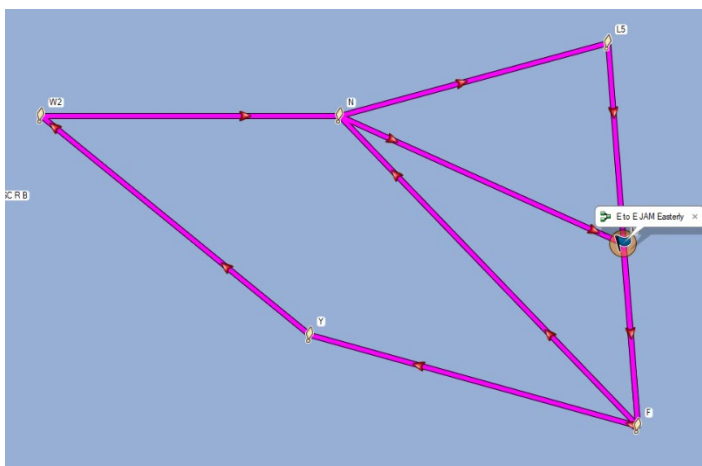
Div 2 11.9nm

ESHOMHSE



Div 1 15.6 nm

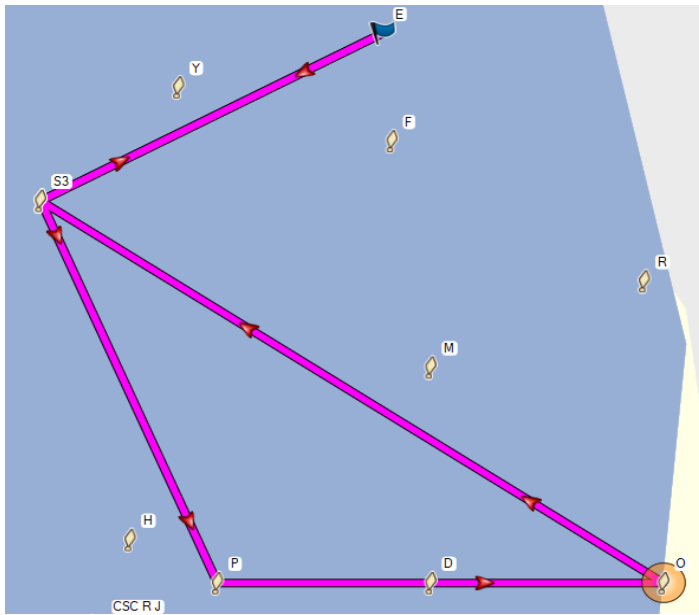
ESHORPMHSE



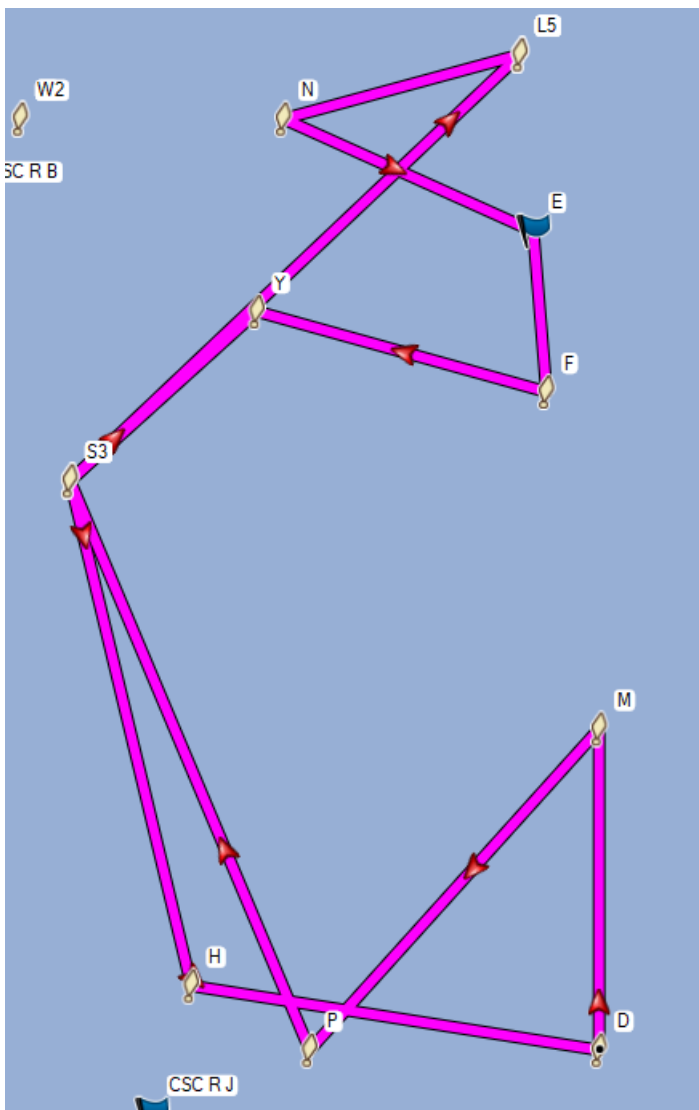
JAM 10.5nm

ESPOSE

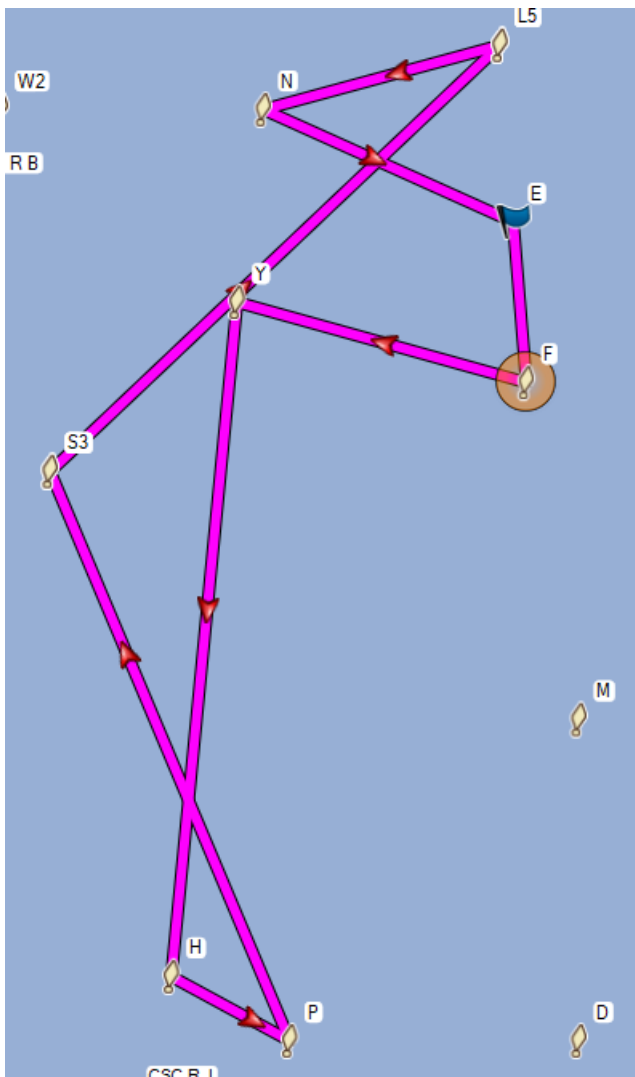
Proposed East Wind Course to replace Course 15



JAM 7.2 nm
NEFYWNLFN



Div 1 13.2nm
NEFYSHDMPSLN



Div 2 9.6 nm

NEFYHPSLN