



ANZAC DAY TROPHY RACE

Supplementary Sailing Instructions (SSIs)

Organising Authority (OA) Fremantle Sailing Club

1. RULES

- 1.1. The event is governed by the rules as defined in The Racing Rules of Sailing (RRS).
- 1.2. Boats shall comply with AS Special Regulation Part 1, Category 5.
- 1.3. The Keelboat NoR & General SIs as modified by these SSIs.

2. SCHEDULE OF RACE

DATE	TIME	EVENT
Thursday, 25 April 2024	1300	Warning signal for Divisions 1, 2 & 6 JAM
	After racing	Presentation of results at FSC

3. CLASS FLAG

- 3.1. The class flag for all Divisions is a white flag.
- 3.2. Boats shall display their assigned Division flag. Refer General SI. 11.2.

4. COURSES

The course descriptions and diagrams are shown in SSI **Attachment A**.

5. THE START

The starting line is between a mast displaying an orange flag on the Race Committee vessel and the course side of FSC Mark L.

6. THE FINISH

The finishing line is between a mast displaying a blue flag on the Race Committee vessel and the course side of FSC Mark L.

7. TIME LIMIT

- 7.1. The time limit is 1615 hrs.
- 7.2. Boats failing to finish within the time limit will be scored "Did Not Finish". This changes RRS 35 & A5.

8. SAFETY REGULATIONS

Refer to General SI. 7 COMMERCIAL SHIPPING.

9. PRIZES

- 9.1. Pennants will be awarded for 1st, 2nd, 3rd and fastest in each Division.
- 9.2. The ANZAC Day Trophy will be awarded to the boat with best performed percentage on handicap (PD) overall.
- 9.3. The announcement of the results will be held in the FSC Sailor's Bar after the acknowledgement to the ANZAC's at approximately 1600.

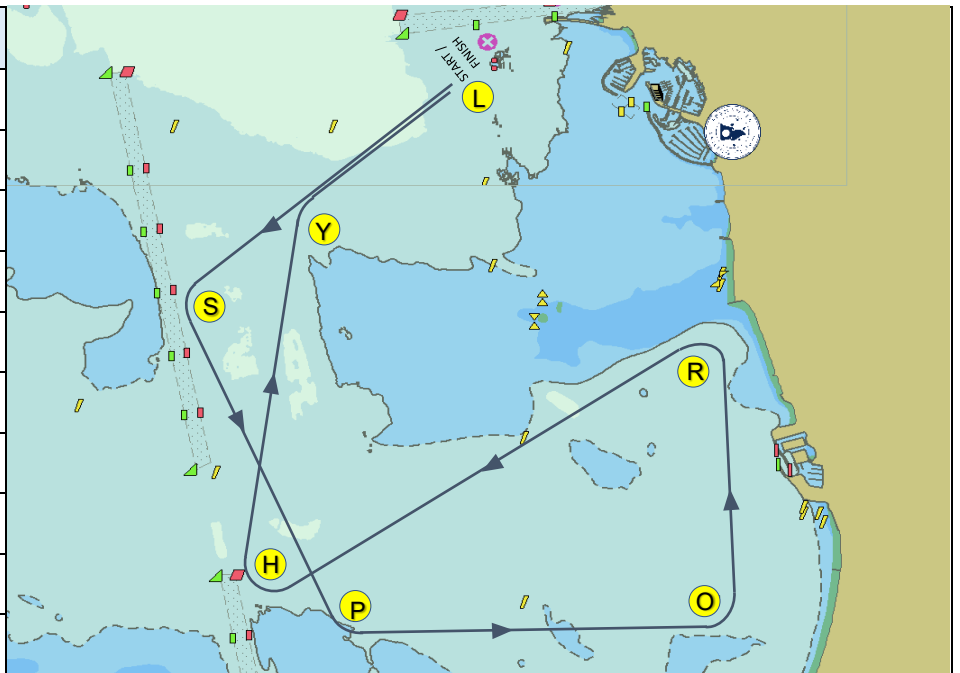


ATTACHMENT A

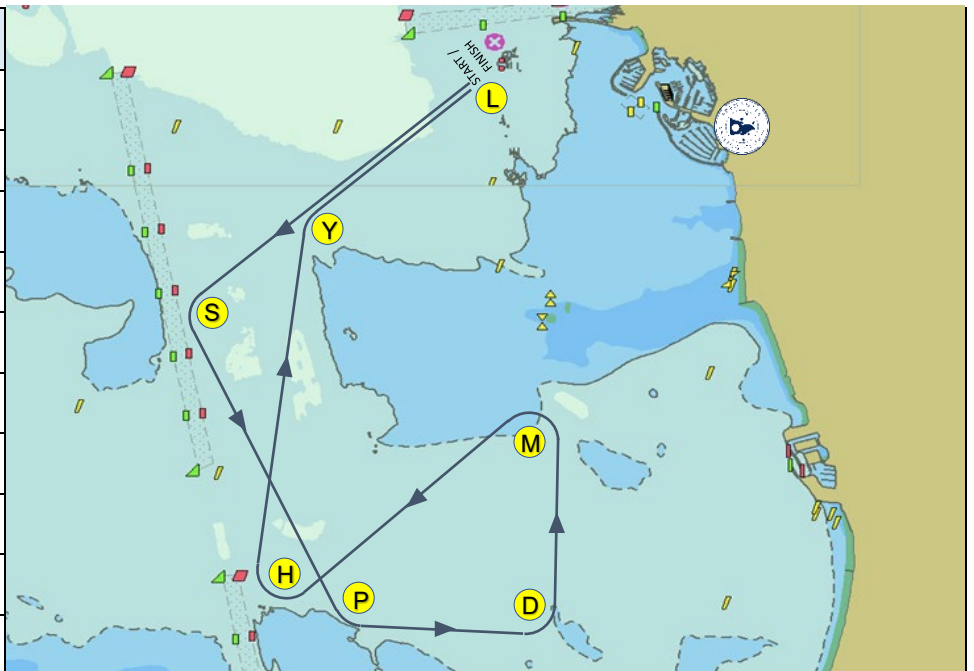
COURSES

ANZAC DAY TROPHY RACE 2024

DIVISION 1	
MARKS	REQUIRED SIDE
FSC Mark L	Start
FSC Mark S	Port
FSC Mark P	Port
FSC Mark O	Port
FSC Mark R	Port
FSC Mark H	Starboard
FSC Mark Y	Starboard
FSC Mark L	Finish
Course Length	13.7 Nm



DIVISION 2	
MARKS	REQUIRED SIDE
FSC Mark L	Start
FSC Mark S	Port
FSC Mark P	Port
FSC Mark D	Port
FSC Mark M	Port
FSC Mark H	Starboard
FSC Mark Y	Starboard
FSC Mark L	Finish
Course Length	11.25 Nm



ATTACHMENT A

COURSES

ANZAC DAY TROPHY RACE 2024

