



COCKBURN CUP

FSC & TCYC Teams Race - Rockingham to Fremantle
24 February 2024

Sailing Instructions (SIs)

Organising Authority (OA) Fremantle Sailing Club

1. RULES

- 1.1. The event is governed by the rules as defined in The Racing Rules of Sailing (RRS).
- 1.2. Boats shall comply with AS Special Regulations Part 1, Category 6.
- 1.3. RRS 40.1 applies. Boats without lifelines (see AS SR Part 1 5.01.1 (j)). It is strongly recommended for competitors sailing doublehanded wear a PFD at all times whilst afloat.
- 1.4. Appendix T – Arbitration shall apply.
- 1.5. **Sails**
Division 6 (Jib and Main) shall use working foresails so as the luff is attached along the forestay(s). No spinnakers.

2. CHANGES TO SAILING INSTRUCTIONS

- 2.1. Any change to the SIs as well as any change to the schedule of race will be posted before 1700 on the day before it will take effect.
- 2.2. Changes to an SI may be made on the water by displaying Code Flag L from the Race Committee vessel prior to the warning signal. Failure to receive this information shall not be grounds for redress. This changes RRS 62.1(a).

3. COMMUNICATIONS WITH COMPETITORS

- 3.1. Notice to Competitors (NTCs) will be posted on the official notice board (ONB) online and may also be displayed on the Sailing Notice Board located in the foyer of the main Clubhouse and inside the door adjacent to the barbeque area at TCYC.
ONB - <https://fsc.com.au/onb/>
- 3.2. On the water, the Race Committee intends to monitor and communicate with competitors on VHF 72.
- 3.3. All boats shall carry a VHF radio capable of communicating on VHF 72 and 16.
- 3.4. [DP] While racing from the first warning signal until the end of the last race of the day, except in an emergency, a boat shall not make voice or data transmissions and shall not receive voice or data communication that is not available to all boats.

4. SIGNALS MADE ASHORE

- 4.1. Signals made ashore will be displayed from the main flag mast on the VIP lawn at FSC as well as the TCYC clubhouse flagstaff.
- 4.2. When flag 'AP' is displayed ashore, '1 minute' is replaced with 'not less than 45 minutes' in Race Signals AP.









5. SCHEDULE OF RACE

DATE	TIME	EVENT
Saturday, 24 February 2024	1425	Warning signal for all Divisions
	After racing	Presentation of results at FSC

6. CLASS FLAG

6.1. The class flag for all Divisions is a white flag.

6.2. Boats shall display their assigned racing Division flag as follows:

FSC BOATS	DIVISION FLAG	TCYC BOATS	DIVISION FLAG
Division 1		Division 1	
Division 2		Division 3	
Division 6 J&M		Division 6 J&M	

7. COURSE

Refer **Attachment A Courses**.

8. MARKS

MARKS	CO-ORDINATES (WGS84)		DESCRIPTION
Starting Line	32° 15.720 S	115° 44.094 E	
TCYC Mark Y	32° 15.125 S	115° 43.955 E	White PVC pole
FSC Mark H	32° 06.700 S	115° 42.250 E	Yellow pyramid buoy
FSC Mark S	32° 05.127 S	115° 41.789 E	Yellow pyramid buoy
FSC Mark W	32° 04.000 S	115° 41.600 E	Yellow pyramid buoy
FSC Mark L	32° 03.800 S	115° 43.500 E	Yellow pyramid buoy

Attachment A shows the approximate mark locations.

9. THE START

9.1. The starting line is between a staff displaying an orange flag on the Race Committee vessel (TCYC's Andrea Christine) at the starboard end and the course side of the port-end starting mark.

9.2. A boat that does not start within 20 minutes after her starting signal will be scored Did Not Start without a hearing. This changes RRS A5.1 and A5.2.

10. SHORTENING THE COURSE

RRS 32.2 (a) applies.



11. THE FINISH

The finishing line is between a mast displaying a blue flag on the Race Committee vessel and the course side of FSC Mark L.

12. PENALTY SYSTEM

RRS 44.1 is changed so that the Two-Turns Penalty is replaced by a One-Turn Penalty.

13. TIME LIMIT

13.1. The time limit is 1745 hrs.

13.2. Boats failing to finish within the time limit will be scored 'Did Not Finish'. This changes RRS 35 & A5.

14. HEARING REQUESTS

14.1. The protest time limit is 60 minutes after the last boat finishes the race of the day or the Race Committee signals no more racing today, whichever is later.

14.2. Hearing request forms are available from the Sailing Office at Fremantle Sailing Club.

14.3. Notices will be posted no later than 30 minutes after the protest time limit to inform competitors of hearings in which they are parties or named as witnesses. Hearings will be held in the Activities Room located at Fremantle Sailing Club.

15. HANDICAPS & SCORING

15.1. Each boat shall race and be scored based on their current Club Performance Handicap (PHF) in their home-club assigned division.

15.2. Teams Race

The best 3 Percentage Differences (PD) based on PHF results from boats of each club will be listed in order of highest to lowest as shown in table below. The team with the lowest total points wins.

PD	Points
1 st highest	1
2 nd highest	2
3 rd highest	3
4 th highest	4
5 th highest	5
6 th highest	6

16. SAFETY REGULATIONS [DP][NP]

All boats shall comply with the following requirements:

- Log on to Fremantle Race Control using VHF 72 between the period 1 hour before the first warning signal and no later than the first warning signal of the day.
- Maintain a constant listening watch on VHF 72 and on standby for distress calls on VHF 16.
- Boats retiring prior to starting or during a race shall notify Fremantle Race Control by VHF 72 or by phone before leaving the race area.
- Carry an EPIRB as per DoT regulations.
- A boat shall have a minimum of two crew inclusive of the helmsperson and each capable of sailing the boat.
- The use of self-steering equipment is permitted for boats sailing doublehanded following their starting signal. This changes RRS 52.



17. COMMERCIAL SHIPPING

- 17.1. Boats shall maintain a minimum distance of 100 metres from all commercial shipping particularly in the following areas:
- At the entrance to Fremantle Harbour.
 - At the northern entrance to and in the Success and Parmelia Channels, Cockburn Sound.
- 17.2. Boats that damage a FPA or DoT mark shall immediately notify FSC Harbour Master of the time, date and nature of the damage. Any cost associated shall be borne by the owner or person in charge of the boat/s involved.

18. BERTHING

Visiting boats to FSC will be allocated a berth by the FSC Harbour Master for a complimentary overnight stay. Boats intending to extend their stay may apply via the online registration.

19. PRIZES

- 19.1 Cockburn Cup results will be announced together with the Warne Shield results in the FSC Bar area 30mins after the FSC Start Boat docks at the jetty and sounds their signal horn.
- 19.2 Pennants will be awarded to 1st, 2nd, 3rd and Fastest in each division based on PHF results.
- 19.3 The Ron and Marie Brown Cup will be awarded to the FSC boat with best performed percentage on handicap (PD) overall.
- 19.4 The Cockburn Cup perpetual trophy will be awarded to the team with the lowest points based on PD.
- 19.5 Additional prizes may be awarded at the discretion of the OA.

20. RISK STATEMENT

Competitors participate in the race entirely at their own risk. Refer RRS 3, Decision to Race. The OA, their officers, members, volunteers, servants or agents accept any responsibility whatsoever in respect of loss of life, personal injury or damage to property which may be sustained by reason of their participation or intended participation in this event or howsoever arising in connection with this event.

Competitors provide their permission for any photograph or video taken during the course of the race to be used for purposes including but not limited to public viewing, marketing/promotional material and web/social media. If a competitor does not want to provide their permission, they must advise the photographer.

21. INSURANCE

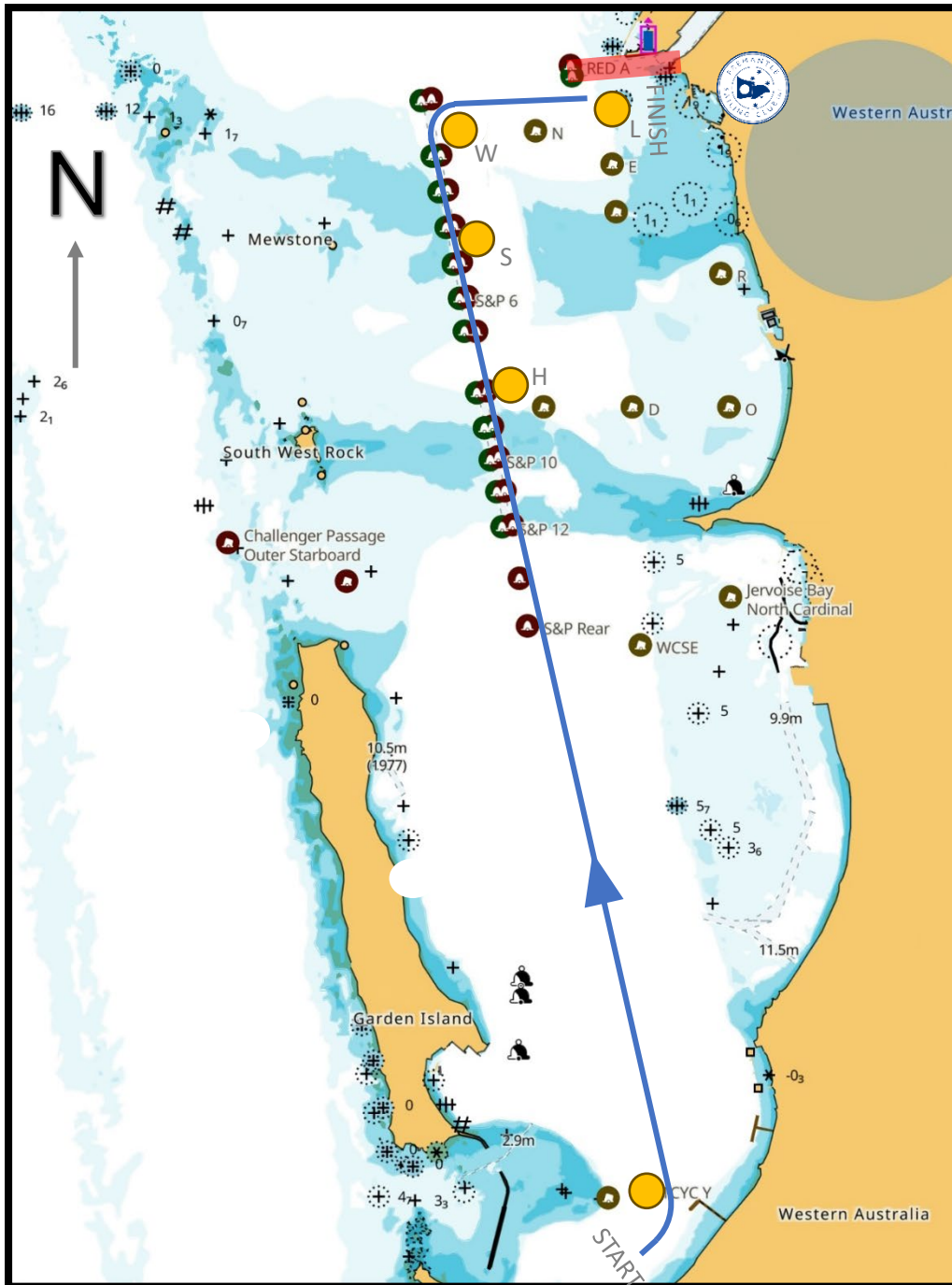
Each participating boat shall be insured with a valid third-party liability insurance with a minimum cover of \$10 million per incident or the equivalent. By taking part in a race or event, owners are deemed to have made a declaration that they have such cover.

22. KEY CONTACTS

Fremantle Race Control	RO Frank Rodda	0478 637 135
TCYC Race Control	RO Neil Mason	0414 750 023
FSC Harbour Master	Jason Hands	0433 024 790
FSC Sailing Administrator	Scott Nunn	0478 073 452



Not to be used for navigation



MARKS	REQUIRED SIDE
Starting Line	Starting in a northeasterly direction
TCYC Mark Y	Port
FSC Mark H	Starboard
FSC Mark S	Starboard
FSC Mark W	Starboard
Finish at FSC Mark L	Finishing in an easterly direction
Course Length	13.7 Nm