



INSHORE RACING

MIKE HARVEY MEMORIAL RACE

Saturday, 25 February 2023

SUPPLEMENTARY SAILING INSTRUCTIONS (SSIs)

Organising Authority (OA) Fremantle Sailing Club

1. RULES

- 1.1. The event is governed by the rules as defined in The Racing Rules of Sailing (RRS).
- 1.2. The Inshore Racing Sailing Instructions as modified by these SSIs.
- 1.3. Boats shall comply with AS Special Regulations Part 1, Category 5.

2. SCHEDULE OF RACE

Date	Time	Event
Saturday, 25 February	1200	Warning signal Division 1
	1205	Warning signal Division 2
	1210	Warning signal Division 6 J&M
		Presentations asap after racing

3. RACING AREA

Refer Addendum A Racing Area.

4. COURSES

- 4.1 Refer Addendum B Courses.
- 4.2 No course flags will be flown.

5. MARKS

The following marks are rounding marks with approximate locations::

Marks	Latitude	Longitude
FSC Mark 'H'	32° 06.700'S	115° 42.250'E
FSC Mark 'L'	32° 03.800'S	115° 43.500'E
FSC Mark 'S'	32° 05.127'S	115° 41.789'E
FSC Mark 'W'	32° 04.000'S	115° 41.600'E
FSC Mark 'Y'	32° 04.600'S	115° 42.500'E
Green No. 10 Channel Marker	32° 07.455'S	115° 42.038'E
Green No. 12 Channel Marker	32° 08.160'S	115° 42.185'E
Red 'B' Channel Marker	32° 04.255'S	115° 41.423'E
Red 'J' Channel Marker	32° 07.103'S	115° 42.064'E
South Transit Beacon Front	32° 08.697'S	115° 42.376'E
South Transit Beacon Rear	32° 09.159'S	115° 42.477'E
Eastern Challenger Passage Lead Beacon	32° 08.731'S	115° 40.254'E
Jervoise Bay North Cardinal Mark	32° 08.880'S	115° 45.010'E

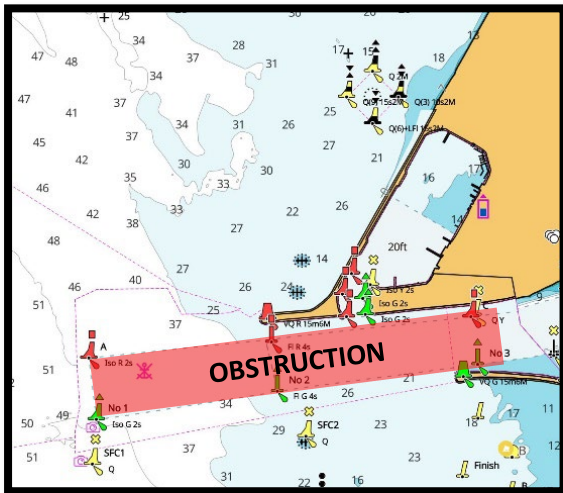
6. OBSTRUCTION[DP]

The following area is designated as an obstruction:

Fremantle Harbour Entrance

While racing, boats shall not enter an area bounded by the lines joining Green No. 1 Harbour Entrance Buoy, Red 'A' Harbour Entrance Buoy, Red 'C' Harbour Entrance Beacon and Green No 3 Harbour Entrance Beacon.

Marks	Latitude	Longitude
Red A Entrance Buoy	32° 3.314' S	115° 43.033' E
Green No. 1 Entrance Buoy	32° 3.422' S	115° 43.052' E
Red C Harbour Entrance Beacon	32° 3.227' S	115° 43.969' E
Green No. 3 Harbour Entrance Beacon	32° 3.326' S	115° 43.986' E



7. THE START

The starting line will be between a mast displaying an orange flag on the Race Committee vessel at the starboard end and FSC Mark 'Y' at the port end.

8. THE FINISH

The finishing line is between a staff displaying a blue flag on the Race Committee vessel at the port end and the course side of the starboard-end finishing mark, FSC Mark L.

9. TIME LIMIT

9.1. The race time limit is 5 hours.

9.2. Boats failing to finish within the time limit will be scored "Did Not Finish". This changes RRS 35 & A5.

10. COMMERCIAL SHIPPING

10.1 Particular care in keeping clear of commercial shipping shall be exercised in the following areas (at least 50m distance from all ships).

a. At the entrance to Fremantle Harbour.

b. At the Northern Entrance to and in the Cockburn Sound Channel.

10.2 Boats subject to a complaint reported by Fremantle Ports Authority (FPA) will be disqualified without a hearing. This changes RRS 63.1.

10.3 Boats that damage a FPA or DoT mark shall immediately notify FSC Harbour Master of the time, date and nature of the damage. Any cost associated with the damaged mark shall be borne by the boat owner or person in charge.

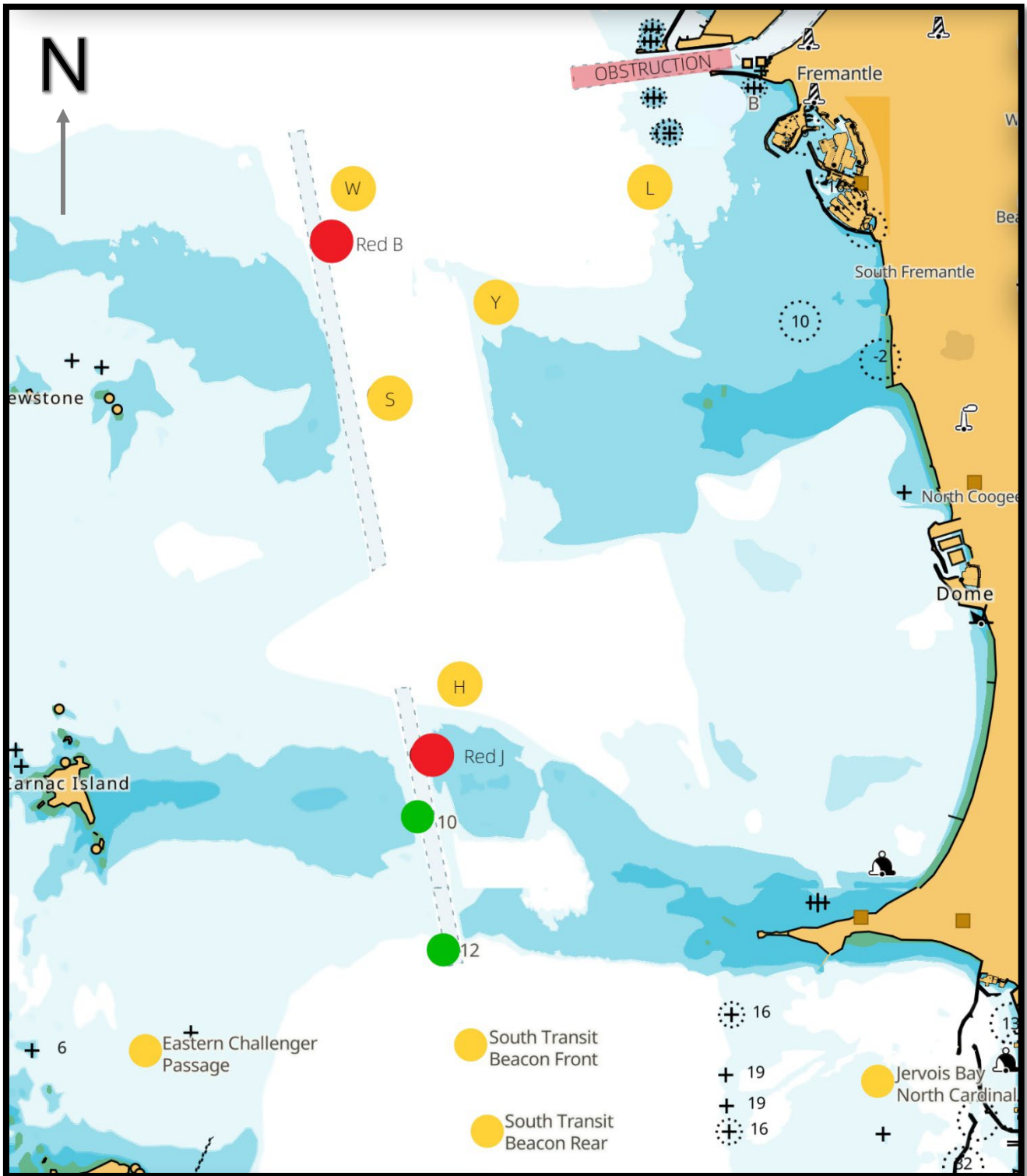
11. PRESENTATION AND PRIZES

- 11.1. Presentation of results will be announced in the Sailors Bar 60 minutes after the last boat has finished.
- 11.2. Pennants will be awarded for 1st, 2nd, 3rd in each division based on PHS results and Fastest over the line.
- 11.3. The Mike Harvey Trophy will be awarded to the boat with best performed percentage on handicap (PD) overall.

12. KEY CONTACTS

FSC Inshore Race Control	Deputy RO Frank Rodda	0417 946 871
FSC Harbour Master	Jason Hands	0433 024 790
FSC Sailing Manager	Chris White	0408 478 414
FSC Sailing Administrator	Scott Nunn	0478 073 452

INSHORE RACING
MIKE HARVEY MEMORIAL RACE
ADDENDUM A – RACING AREA



Not to be used for navigation.

INSHORE RACING
MIKE HARVEY MEMORIAL RACE
 ADDENDUM B – COURSES

DIVISION 1	
MARKS	ROUNDING
FSC Mark Y	Start
Red B Channel Marker	Port
Red J Channel Marker	Starboard
Green No. 10	Port
Green No. 12	Starboard
Eastern Challenger Passage Transit Beacon	Port
South Transit Beacon Rear	Port
Jervoise Bay North Cardinal	Port
South Transit Beacon Front	Starboard
FSC Mark H	Starboard
FSC Mark S	Starboard
FSC Mark W	Starboard
FSC Mark L	Finish
Course Length	19.45Nm

DIVISION 2	
MARKS	ROUNDING
FSC Mark Y	Start
Red B Channel Marker	Port
Red J Channel Marker	Starboard
Green No. 10	Port
Green No. 12	Starboard
South Transit Beacon Rear	Port
Jervoise Bay North Cardinal	Port
South Transit Beacon Front	Starboard
FSC Mark H	Starboard
FSC Mark S	Starboard
FSC Mark L	Finish
Course Length	16.00Nm

Division 6 J&M	
MARKS	ROUNDING
FSC Mark Y	Start
Red B Channel Marker	Port
Red J Channel Marker	Starboard
Green No. 10	Port
Green No. 12	Starboard
South Transit Beacon Rear	Port
Jervoise Bay North Cardinal	Port
South Transit Beacon Front	Starboard
FSC Mark H	Starboard
FSC Mark S	Starboard
FSC Mark L	Finish
Course Length	16.00Nm