



COCKBURN CUP

FSC & TCYC Teams Race - Rockingham to Fremantle

Saturday, 11 February 2023

Sailing Instructions (SIs)

Organising Authority (OA) Fremantle Sailing Club

1. RULES

- 1.1. The event is governed by the rules as defined in The Racing Rules of Sailing (RRS).
- 1.2. Boats shall comply with AS Special Regulations Part 1, Category 6.
- 1.3. Appendix T – Arbitration shall apply.
- 1.4. **Sails**
Division 6 (Jib and Main) shall use working foresails so as the luff is attached along the forestay(s).

2. CHANGES TO SAILING INSTRUCTIONS

- 2.1. Any change to the SIs as well as any change to the schedule will be posted before 1700 on the day it will take effect.
- 2.2. Changes to a sailing instruction may be made on the water by VHF and displaying Flag L from the Race Committee vessel prior to the warning signal. Failure to receive this information shall not be grounds for redress. This changes RRS 62.1(a).

3. COMMUNICATIONS WITH COMPETITORS

- 3.1. Notices to competitors will be posted on the official noticeboard located in the FSC foyer as well as inside the door adjacent to the barbeque area at TCYC.
- 3.2. On the water, the Race Committee intends to monitor and communicate with competitors on VHF radio channel 72.
- 3.3. [DP] While racing from the first warning signal until the end of the last race of the day, except in an emergency, a boat shall not make voice or data transmissions and shall not receive voice or data communication that is not available to all boats.

4. SIGNALS MADE ASHORE

- 4.1. Signals made ashore will be displayed on the main flag mast on the VIP lawn at FSC as well as the TCYC clubhouse flagstaff.
- 4.2. When flag 'AP' is displayed ashore, '1 minute' is replaced with 'not less than 45 minutes' in Race Signals AP.

5. SCHEDULE OF RACE

Date	Time	Event
Saturday, 11 February	1425	Warning signal for all Divisions
	After racing	Presentation of results at FSC

6. CLASS FLAG

- 6.1. The class flag for all Divisions is a white flag.
- 6.2. Boats shall display their assigned Racing Division flag.

FSC Boats	Division Flag	TCYC Boats	Division Flag
Division 1		Division 1	
Division 2		Division 3	
Division 6 J&M		Division 6 J&M	

7. COURSE

Refer Addendum A Courses.

8. MARKS

Marks	Approximate Positions	
Starting Line	32° 15.920'S	115° 43.360'E
Southern Flats East Cardinal Mark	32° 15.20'S	115° 43.50'E
FSC Mark H	32° 06.700'S	115° 42.250'E
FSC Mark S	32° 05.127'S	115° 41.789'E
FSC Mark W	32° 04.000'S	115° 41.600'E
FSC Mark L	32° 03.800'S	115° 43.500'E

Addendum A shows the approximate mark locations.

9. THE START

- 9.1. The starting line is between a staff displaying an orange flag on the Race Committee vessel (TCYC Andrea Cristine) at the starboard end and the course side of the port-end starting mark.
- 9.3. A boat that does not start within 5 minutes after her starting signal will be scored Did Not Start without a hearing. This changes RRS A5.1 and A5.2.

10. THE FINISH

The finishing line is between a staff displaying a blue flag on the Race Committee vessel at the port end and the course side of the starboard-end finishing mark, FSC Mark L.

11. PENALTY SYSTEM

RRS 44.1 is changed so that the Two-Turns Penalty is replaced by a One-Turn Penalty.

12. HEARING REQUESTS

- 12.1. The protest time limit is 60 minutes after the last boat finishes the race of the day or the Race Committee signals no more racing today, whichever is later.
- 12.2. Hearing request forms are available from the Sailing Office at Fremantle Sailing Club.
- 12.3. Notices will be posted no later than 30 minutes after the protest time limit to inform competitors of hearings in which they are parties or named as witnesses. Hearings will be held in the Activities Room located at Fremantle Sailing Club.

13. HANDICAPS & SCORING

- 13.1. Each boat shall race with their current club Performance Based Handicap, in their

normal club division.

- 13.2. The result will be based on the Performance against handicap, Percentage Difference [PD] for each boat on the day.
- 13.3. The three top boats Performance against handicap [PD] from each club shall score towards the result. To be confirmed.
- 13.4. Six boats to be listed based on their Performance against handicap [PD] first and so on down to the sixth.
- 13.5. Low Point Scoring System to be applied to the list of six on Performance against handicap [PD]
- 13.6. The Club with the lowest score will win the Cockburn Cup.

14. TIME LIMIT

- 14.1. The time limit is 1745 hrs.
- 14.2. Boats failing to finish within the time limit will be scored "Did Not Finish". This changes RRS 35 & A5.

15. SAFETY REGULATIONS [DP][NP]

All boats shall comply with the following requirements:

- a) Log on by radio to Fremantle Inshore Race Control using VHF 72 before the warning signal.
- b) Maintain a constant listening watch on VHF 72.
- c) Boats that retire prior to starting or during a race shall notify Fremantle Inshore Race Control by radio before leaving the race area.
- d) Carry an EPIRB as per DoT regulations.
- e) When due to its design a boat is unable to satisfy Category requirements or is compliant with Category 5 or better but without lifelines as described in ASSR Part 1, section 3.12 and Section 5.01.1(g), they shall comply with the requirements of RRS 40 and all crew shall wear a PFD1 or PFD2 (buoyancy Aid) at all times while afloat, without the need of the Race Committee to display the 'Y'.

16. COMMERCIAL SHIPPING

- 16.1. Particular care in keeping clear of commercial shipping shall be exercised in the following areas (at least 50m distance from all ships):
 - a) At the entrance to Fremantle Harbour.
 - b) At the Northern Entrance to and in the Cockburn Sound Channel.
- 16.2. Boats subject to a complaint reported by Fremantle Ports Authority (FPA) will be disqualified without a hearing. This changes RRS 63.1
- 16.3. Boats that damage a FPA or DoT mark shall immediately notify FSC's Harbour Master of the time, date and nature of the damage. Any cost associated shall be borne by the owner or person in charge of the boat/s involved.

17. INCIDENT AND RACE CONTROL REPORTING

Whilst participating in any race organised by FSC, there is a fundamental obligation to inform Race Control/Officer of incidents as soon as practical. An incident is any event where there is any damage or risk of damage to people, property and or the Club.

MOB incidents must be reported immediately on VHF radio on the specified race channel to the Race Officer on the start boat if the incident occurs at the start of a race, or to Race Control if the incident occurs after the start boat has left the course.

Any incident, boat, or equipment failure that results in any of the following, and when the report may improve safety and reduce the likelihood of a recurrence then a formal FSC Incident Report needs to be completed.

- 1) Injury that required professional medical attention.
- 2) Incidents involving the need to inform race Control such as contact between boats, MOB, grounding or structural failure.
- 3) Failure of FSC's management systems that resulted in a materially worse outcome.
- 4) Incident requiring outside assistance e.g. activation of a beacon /distress signal, Sea Rescue, 3rd Party to the event / race.
- 5) A near miss of any the above. A near miss is considered as an incident where no property was damaged and no personal injury was sustained, but where given a slight shift in time or position catastrophic damage and/or serious injury could easily have occurred.

18. BERTHING

Visiting boats to FSC will be allocated a berth by the FSC Harbour Master for a complimentary overnight stay. Boats intending to extend their stay may apply via the online registration.

19. PRIZES

- 19.1 Cockburn Cup results will be announced together with the Warne Shield results in the FSC Bar area 30mins after the FSC Start Boat docks at the jetty and sounds their signal horn.
- 19.2 Pennants will be awarded to 1st, 2nd, 3rd and Fastest in each division based on PHS results.
- 19.3 The Cockburn Cup perpetual trophy will be awarded to the team with the lowest points based on PD.
- 19.4 Additional prizes may be awarded at the discretion of the OA.

20. RISK STATEMENT

Competitors participate in the race entirely at their own risk. Refer RRS 3, Decision to Race. The OA, their officers, members, volunteers, servants or agents accept any responsibility whatsoever in respect of loss of life, personal injury or damage to property which may be sustained by reason of their participation or intended participation in this event or howsoever arising in connection with this event.

Competitors provide their permission for any photograph or video taken during the course of the race to be used for purposes including but not limited to public viewing, marketing/promotional material and web/social media. If a competitor does not want to provide their permission, they must advise the photographer.

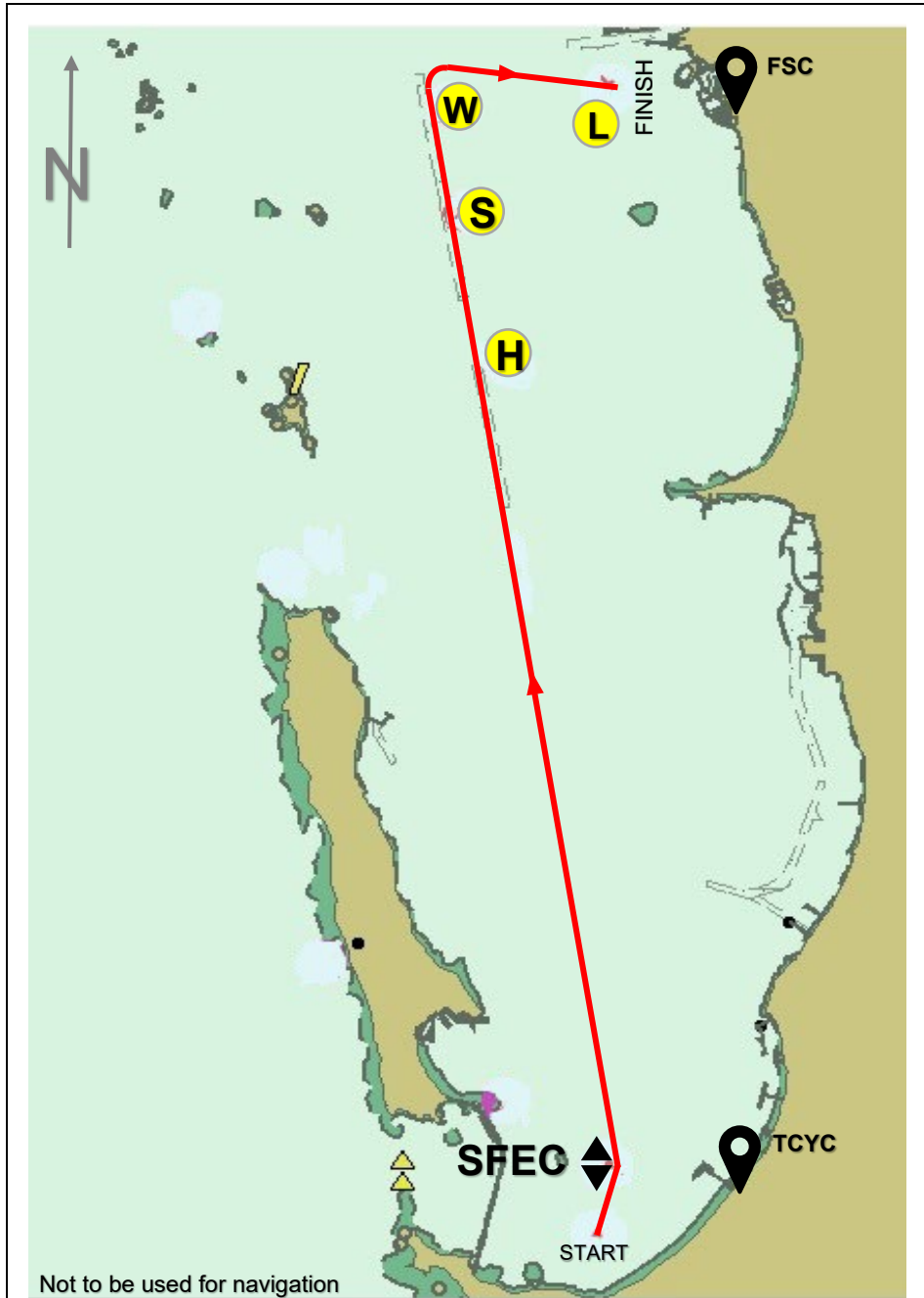
21. INSURANCE

Each participating boat shall be insured with a valid third-party liability insurance with a minimum cover of \$10 million per incident or the equivalent. By taking part in a race or event, owners are deemed to have made a declaration that they have such cover.

22. KEY CONTACTS

FSC Inshore Race Control	Deputy RO Frank Rodda	0417 946 871
TCYC Race Officer	Neil Mason	0414 750 023
FSC Harbour Master	Jason Hands	0433 024 790
FSC Sailing Administrator	Scott Nunn	0478 073 452

ADDENDUM A
COURSE
COCKBURN CUP 2023



Marks	Rounding
Starting Line	Starting in a northerly direction
Southern Flats East Cardinal	Passing to Port
FSC Mark H	Starboard
FSC Mark S	Starboard
FSC Mark W	Starboard
Finish at FSC Mark L	Finishing in an easterly direction
Course Length	13.7 Nm