



INSHORE RACING AUSTRALIA DAY TROPHY RACE

Thursday, 26 January 2023

Supplementary Sailing Instructions (SSIs)

Organising Authority (OA) Fremantle Sailing Club

1. RULES

- 1.1. The event is governed by the rules as defined in The Racing Rules of Sailing (RRS).
- 1.2. The Inshore Racing Sailing Instructions as modified by these SSIs.

1.3. Sails

Division 6 (Jib and Main) shall use working foresails so as the luff is attached along the forestay(s).

2. SCHEDULE OF RACE

Date	Time	Event
Thursday, 26 January	1015	Warning signal for Divisions 0,1, 2 & 6
	After racing	Presentation of results at FSC

3. CLASS FLAG

- 3.1. The class flag for all Divisions is a white flag.
- 3.2. Boats shall display their assigned Inshore Division flag. Refer SI. 10.2.

4. COURSES

The course descriptions and diagram are shown in SSI Addendum A.

5. THE START

The starting line is between a mast displaying an orange flag on the Race Committee vessel at the starboard end and the course side of the FSC Mark L at the port-end.

6. THE FINISH

The finishing line is between a mast displaying a blue flag on the Race Committee vessel at the port end and the course side of the FSC Mark L at the starboard-end.

7. TIME LIMIT

- 7.1. The time limit is 1230 hrs.
- 7.2. Boats failing to finish within the time limit will be scored "Did Not Finish". This changes RRS 35 & A5.

8. SAFETY REGULATIONS

Refer to SI.7 COMMERCIAL SHIPPING

9. PRIZES

- 9.1. Pennants will be awarded for 1st, 2nd, 3rd and fastest in each Division.
- 9.2. The Australia Day Trophy will be awarded to the boat with best performed percentage on handicap (PD) overall.

ADDENDUM A

COURSES

AUSTRALIA DAY TROPHY RACE 2023

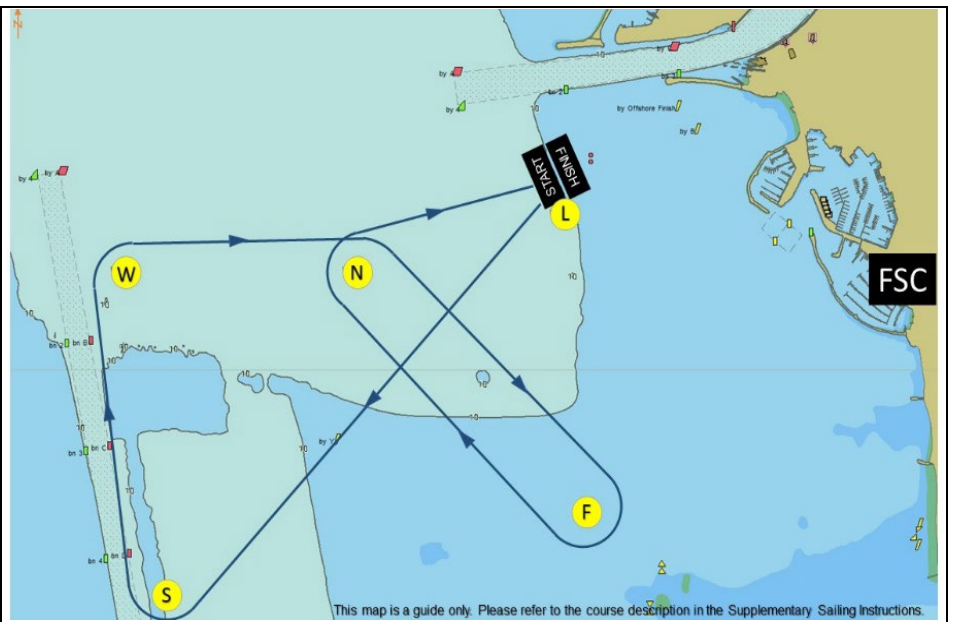
DIVISION 0	
MARKS	ROUNDING
FSC Mark L	Start
FSC Mark S	Starboard
Iso 11m Mark	Starboard
FSC Mark P	Starboard
FSC Mark S	Starboard
FSC Mark L	Finish
Course Length	12.1 Nm

This map is a guide only. Please refer to the course description in the Supplementary Sailing Instructions.

DIVISION 1	
MARKS	ROUNDING
FSC Mark L	Start
FSC Mark S	Starboard
FSC Mark W	Starboard
FSC Mark B	Starboard
FSC Mark F	Starboard
FSC Mark N	Starboard
FSC Mark L	Finish
Course Length	8.7 Nm

This map is a guide only. Please refer to the course description in the Supplementary Sailing Instructions.

DIVISION 2	
MARKS	ROUNDING
FSC Mark L	Start
FSC Mark S	Starboard
FSC Mark W	Starboard
FSC Mark N	Starboard
FSC Mark F	Starboard
FSC Mark N	Starboard
FSC Mark L	Finish
Course Length	7.1 Nm



DIVISION 6	
MARKS	ROUNDING
FSC Mark L	Start
FSC Mark S	Starboard
FSC Mark N	Starboard
FSC Mark F	Starboard
FSC Mark N	Starboard
FSC Mark L	Finish
Course Length	6.5 Nm

