



**SUPPLEMENTARY  
SAILING INSTRUCTIONS**

**RACE TO  
ROCKINGHAM**  
**THE CRUISING YACHT CLUB  
(TCYC)**

**SATURDAY  
27TH NOVEMBER 2021**

**Feeder Race for the  
TCYC CATALPA CUP  
Start Time 0900  
All Divisions**

**PLEASE NOTE:  
Fremantle Sailing Club facilities will be open  
prior to the race!**

# **ORGANISING AUTHORITY FREMANTLE SAILING CLUB (INC.)**

## **FSC INSHORE RACING COMMITTEE**

Captain – Alan Anderson  
Principal Race Officer – Colin McDougall  
Handicapper – Ernie Delfos  
Division 1 Representative – Roger Passmore  
Division 2 Representative – Brian Cooper  
Publicity / Inshore Trophy Officer – Kath Moulden  
Committee Member – John Palmer  
Committee Member – Dick Sherwood.

## **CHIEF RACE OFFICER**

Colin McDougall

## **FSC SAILING OFFICE CONTACTS**

Chris White  
Phone: (08) 9435 8817

ALL YACHTS ARE REQUIRED TO LOG ON by radio by calling,  
“Fremantle Inshore Race Control” stating POB, prior to 0845.  
Yachts not doing so will be considered DNS.

**SUPPLEMENTARY SAILING INSTRUCTIONS**  
**2021 RACE TO ROCKINGHAM - THE CRUISING YACHT CLUB (TCYC)**  
**SATURDAY 27<sup>TH</sup> NOVEMBER 2021**

**1. RULES**

The rules will be those prescribed by the current Racing Rules of Sailing (RRS) and Fremantle Sailing Club Inshore Sailing Instructions 2021-2022 and these Supplementary Sailing Instructions govern the race.

**2. SAFETY**

Safety Category as per Fremantle Sailing Club Inshore Sailing Instructions 2021-2022 (Red Book)

**3. START TIMES**

Warning Signal                      Division 1, 2 and 6 J&M                      0855hrs

The Start Boat will display the **White Class Flag** for all divisions to start together.

**PLEASE NOTE:**

A light wind course is now available, please allow time to exit FSC and transit to FSC Mark S prior to warning.

There will be no start delay.

**4. THE START AND THE COURSES see \* 1 or \* 3**

**\*Course 1:**

Start line will be in conjunction with FSC mark **L**.

From                      Start at FSC mark **L**

To                        FSC mark **S** to PORT,

Leaving                FSC mark **H** to PORT

To                        Southern Flats Beacon to STARBOARD.

[Approx. Position 32S 15.2 , 115E 43.5]

Stay clear of prohibited area along the shoreline

To                        TCYC Buoy "Q" to STARBOARD. [Approx. Position 32S 16.4 115E 43.6]

To                        Finish Line, crossing in a South Westerly direction.

Line set at approx. 90deg to the lay line to the following mark. Start in that direction.

**\*Course 3:**

Start line will be in conjunction with FSC mark **S**.

From                      Start at FSC mark **S**.

Leaving                FSC mark **H** to PORT,

To                        Southern Flats Beacon to STARBOARD.

[Approx. Position 32S 15.2 115E 43.5]

Stay clear of prohibited area along the shoreline

To                        TCYC Buoy "Q" to STARBOARD.

[Approx. Position 32S 16.4 115E 43.6]

To                        The Finish Line, crossing in a South Westerly direction.

Line set at approx. 90deg to the lay line to the following mark. Start in that direction.

**6. TCYC JETTY FINISH LINE**

The finishing line will be an imaginary line between the TCYC Finish Box on top of TCYC Club House and a white PVC Pole moored out from the end of the TCYC Jetty. Sail to mark "Q" keeping this to STARBOARD and then proceed to the finishing line.  
(See Attachment A - The Cruising Yacht Club Finish Line)

**7. COMMERCIAL SHIPPING**

Yachts shall move out of the Cockburn Sound Channel well clear of any approaching commercial vessel. Your attention is drawn to the Inshore Racing Sailing Instruction Paragraph 7. Please read it carefully.

**8. TIME LIMIT**

Boats that do not finish by 12:30pm will be scored DNF.

**9. MOORINGS**

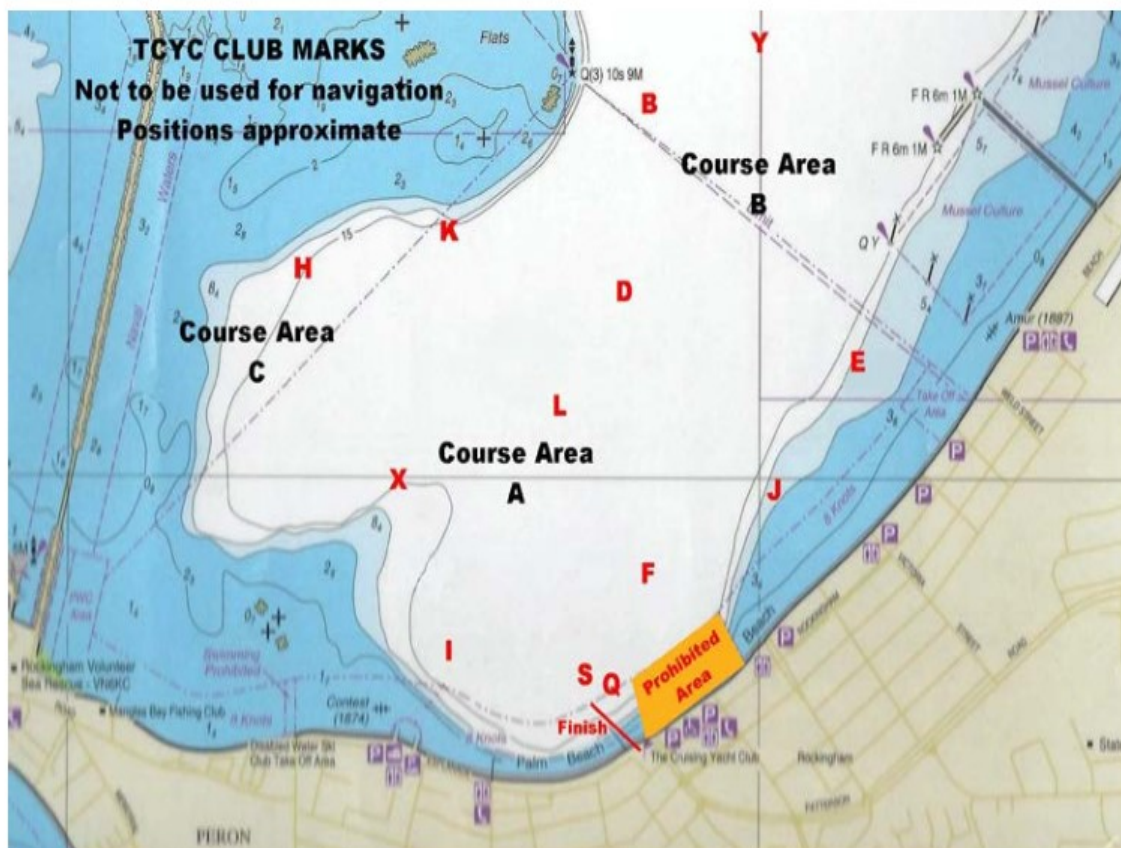
FSC Yachts may use TCYC moorings whilst stopping at the Club for lunch.  
A shuttle service will collect sailors from the boats and take them ashore and bring them back to their boats in time for the Catalpa Race.

**10. ANNOUNCEMENT OF RESULTS**

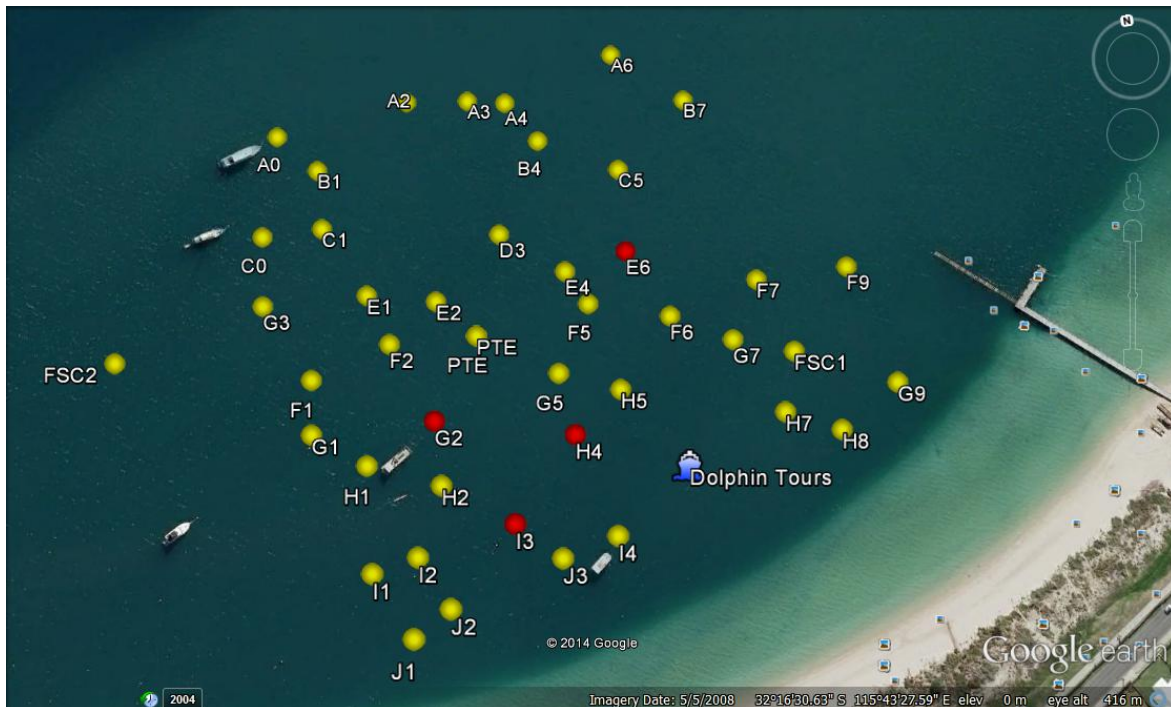
FSC results will be processed and announced together with the Catalpa Race (TCYC) results at FSC following the conclusion of both races.

## ATTACHMENT A

The Cruising Yacht Club (TCYC) Finish Line



## TCYC MOORING MAP



Moorings will not be allocated to specific yachts.

Please use discretion when selecting a mooring, please allow for swing you need.